

Windjammer IV, Vindicator II

General Mounting Instructions

WARNING

THIS HARDWARE AND THESE INSTRUCTIONS WERE DESIGNED SOLELY FOR MOUNTING WINDJAMMER IV AND VINDICATOR II FAIRINGS MANUFACTURED BY THE VETTER CORPORATION. IF YOU ARE UNABLE TO DETERMINE IF THE HARDWARE APPLIES TO YOUR MOTOR-CYCLE, CONTACT YOUR DEALER. IF HE IS NOT AVAILABLE, CONTACT THE VETTER CORPORATION CUSTOMER SERVICE DEPARTMENT.

THESE INSTRUCTIONS MUST BE GIVEN TO THE CONSUMER AS A GUIDE TO FAIRING MOUNTING AND REMOVAL.



Mounting Instructions

There are three sets of instructions which apply to fairing and hardware mounting:

Owner's Manual

Windjammer IV/Vindicator II Owner's Manual which is packaged inside your fairing under the left side tonneau cover. The owner's manual contains a nomenclature guide, final adjustments, troubleshooting, maintenance, and a copy of the Vetter Corporation Limited Warranty.

General Mounting Instructions

General Mounting Instructions (which you are now reading). These instructions are used to install the mounting hardware and to mount your fairing.

Supplementary Instructions

Supplementary Instructions, packaged with your fairing hardware kit, pertain to your particular model motorcycle, and are used in conjunction with these General Mounting Instructions.

HOW TO USE THEM

The Supplementary Instructions are keyed step-by-step to these General Instructions, and are designed to be used at the same time. We recommend that you go to the Supplementary Instructions now and circle any step in these General Instructions which has a corresponding step in the Supplementary Instructions. **IT'S THE EASY WAY!** After you've circled the correlated steps, you'll begin with these General Instructions, referring to the Supplementary when you're reminded by a circled step here.

Read through all three sets of instructions completely before attempting installation. Pay close attention to notes referring you from one set of instructions to another.

ASSEMBLY PROCEDURE

1. Preparation for Fairing Installation

Objective
Fairing installation requires removal of the motorcycle's headlight and turnsignals. In the case of Vindicator II, the turnsignals will be remounted in step 5. Don't forget to check your Supplemental Instructions as you go.

- Remove Headlamp**
- A. Remove your motorcycle headlamp. Check the wire code in your motorcycle. If it does not agree with the color code noted in the Supplemental Instructions, note the variance for future reference.
- Remove Turnsignals**
- B. Disconnect the right and left turnsignal wires, and remove the turnsignal assemblies.
- Remove Reflectors**
- C. Unless front reflectors are mounted on the lower portion of the forks where they won't be obscured by the fairing, they must be removed from the motorcycle. They will be remounted later.
- Remount Nacelle**
- D. If the turnsignal units were used to secure the headlight nacelle, use the nuts and bolts provided by Vetter to hold the nacelle in place, unless otherwise instructed.
- Remove Gas Tank**
- E. Remove the motorcycle gas tank to prevent damage during installation and to facilitate assembly.

2. Electrical Connections

Objective
Part of the motorcycle's electrical equipment has been removed to be replaced by fairing components. The wiring harness must be connected to the motorcycle at this time. In addition to the headlight and running lights, connections may also be required for the cigarette lighter or auxiliary lighting.

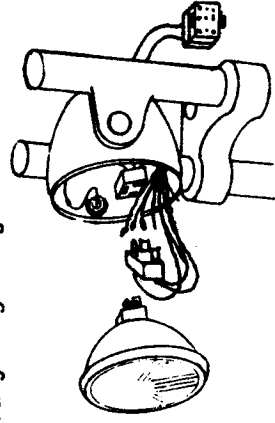


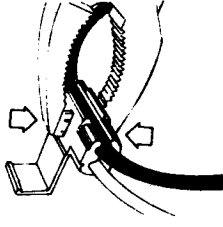
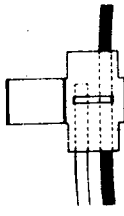
Illustration 1

- A. Route the external harness into the back of the headlight nacelle. (Honda GL1000 is different. See the Supplemental Instructions.)
- Connect Wiring**
- B. Using the color code provided in the Supplemental Instructions, make the electrical connections

Blue Connectors

For Honda GL1000, some pre-1974 Japanese models, BMW, Harley-Davidson, and all European motorcycles: use the blue connectors for connecting the wire harness into the motorcycle's electrical system. (See blue connector instructions below.)

- * Snap the blue connector over the appropriate motorcycle wire.
- * Insert the appropriate fairing wire into the hole on the right side of the blue connector. The wire will not go all the way through the connector.
- * Squeeze the metal tab down onto the wires to make the connection. The metal tab must be flush with the top of the blue connector.
- * Fold the plastic lid and snap closed.



Accessories

- C. Two wires on the harness (brown and orange) can be used for accessories. Before making use of these extra connections for lighting or other accessories, insure that your motorcycle battery will not be drained by the extra current demand.

If the headlight nacelle was removed, use the wiring bag supplied by Vetter corporation to secure your headlight wiring.

Wiring Bag

The hardware kits come with a black vinyl wiring bag. Use this bag to cover wiring which was exposed when headlight nacelle was removed. Push wires into wiring bag, pull the drawstring and secure the bag with two ty-raps connected together to the front brake hose. Mount the bag upside-down so that water cannot enter.

Nacelle Cover

- D. If your headlight nacelle is to remain, use black electrical tape to secure the provided cover to the nacelle.

3. Mounting Bracket Installation

The Windjammer IV and Vindicator II are designed to fit a large number of different motorcycles. This requires that each model motorcycle have a specially designed mounting bracket. When installed properly, the bracket will locate the fairing at the proper height and fore and aft location on your motorcycle. Use all the hardware specified, and periodically check for tightness after installation.

If you have a
Safety Bar

BEFORE MOUNTING YOUR WINDJAMMER IV / VINDICATOR II HARDWARE WITH A SAFETY BAR, CHECK TO SEE THAT THE MOUNTING BRACKET CAN BE POSITIONED SECURELY ON THE FRAME WITHOUT INTERFERENCE FROM THE SAFETY BAR:

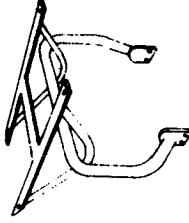
- * Mark the position of the upper safety bar mount against the motorcycle frame.
- * Remove the safety bar and position the mounting hardware on the frame. The mounting hardware should clear all marks that locate the upper safety bar mount.

IF IT IS OBVIOUS THAT THE MOUNTING BRACKET AND SAFETY BAR CANNOT BE USED TOGETHER, DO NOT ATTEMPT TO MOUNT THE FAIRING WITH THE SAFETY BAR. IF THERE IS NO APPARENT INTERFERENCE, CONTINUE WITH THE APPROPRIATE SECTION.

CAUTION

Open loop type safety bars

- * Thread the safety bar through the side loops of the mounting bracket.
- * Proceed with the standard mounting bracket installation step-3.



Closed loop type safety bars

Certain closed loop safety bars can be used on the following motorcycles only if the mounting hardware does not have to be modified.

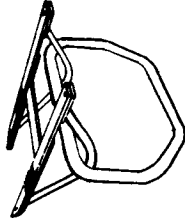
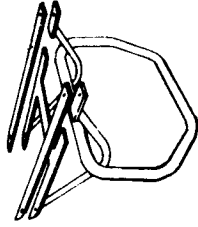
Honda GL1000, CB400T, CX500
Kawasaki KZ650
Moto Guzzi - All
Suzuki GS400, GT380/550, GS550, GT750, GS750, RE5
Triumph T150, T160
Yamaha XS360, XS400, RD400, 650, XS750, XS1100

WARNING

CUTTING ANY PART OF THE MOUNTING BRACKET OF THE ABOVE MOTORCYCLES, OR THOSE LISTED IN THE SUPPLEMENTARY INSTRUCTIONS, OR FAILURE TO USE A SAFETY BAR KIT WHEN THE RAILS ARE CUT ON OTHER MODELS WILL RESULT IN STRUCTURAL DAMAGE TO THE BRACKET AND, SUBSEQUENTLY, TO THE FAIRING.

AFTER HAVING:

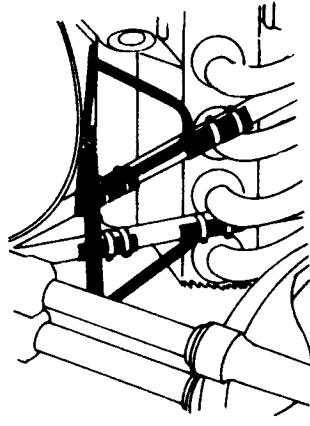
- Checked to assure your motorcycle is not on the aforementioned list or noted in the supplementary instructions;
- Checked to verify that there is no interference;
- Proceed with the following instructions:
- * Make cutouts between crossmember and the rear tube weld joint. Cut spaces in the mounting bracket rails slightly larger than the diameter of the safety bar.
- * Slip the safety bar through the cutouts made in the bracket.
- * Place the adaptor plate on top of the hardware rail and tap them together.
- * Proceed with the standard mounting bracket installation step 3.



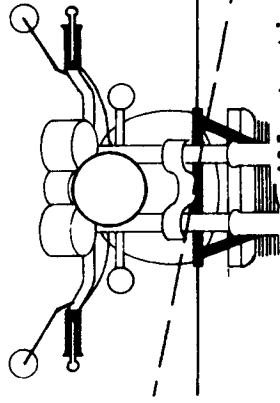
Install Bracket

A. Mounting Bracket Installation.

Raise the bracket up between the motorcycle frame and front wheel; then position the bracket on the frame downtubes below the steering head.



- B. Secure the bracket loosely to the frame members with the mounting clamps.



- C. Check bracket for horizontal alignment by viewing it from the front of the motorcycle. If adjustment is required, tap bracket to a level position. See illustration 3.

Level
Bracket

illustration 3

Center
the Bracket

D. Stand on the footpegs. Check the bracket for centering with the bike, and make adjustments as necessary. This is done by turning the handlebars left and right, and tapping the mount until the spaces between the forks and side rails of the hardware are equal. When complete, be sure to recheck the horizontal alignment.

Tighten

E. Tighten all mounting clamps.

WARNING

THE PRIME CAUSE OF WINDSHIELD, FAIRING AND HARDWARE FAILURE IS LOOSE HARDWARE, FOR YOUR OWN PROTECTION, USE ALL PROVIDED MOUNTING CLAMPS AND CHECK THEM PERIODICALLY FOR TIGHTNESS.

Objective

4. Installing the Windjammer IV or Vindicator II Fairing

Once the bracket is securely attached to the motorcycle, the fairing is ready to be installed. One important item to remember is that rubber washers should always be installed between steel washers and the fairing.

Install
Fairing

a. Install a steel and rubber on each of the four mounting bolts. Be sure that the steel washer is against the bolt head and the rubber washer is in contact with the fairing.

Vindicator
Turn Signals

b. VINDICATOR: Place the turn signal brackets on top of the hardware support shelves and tape them to prevent any movement while the fairing is being installed.

Tighten
Bolts

c. Set the fairing on the mounting bolts, and tighten enough to partially compress the rubber washers.

Plug in
Wiring
Harness

d. Plug the external wire harness into the fairing at the serial number plate. Check to see that the plug is properly engaged into the socket. Properly installed, you should not be able to disengage it without depressing the locking prongs.

Install
Gas Tank

e. Reinstall the motorcycle gas tank.

Vindicator
Turn Signals

5. Special Vindicator II instructions

The Vindicator II fairing requires installation of the motorcycle turnsignals. Some installations use the original motorcycle turnsignal stalks, while others require new stalks which are included in the hardware. Refer to your Supplementary Instructions for information on your particular motorcycle.

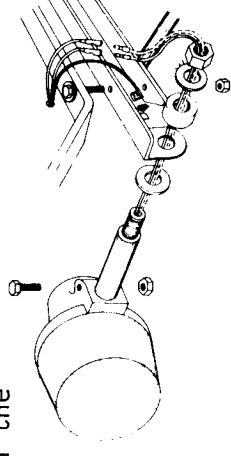
Install
Turn
Signals

A. Install the turnsignals through the adaptor plate and tighten sufficiently to prevent the turnsignal from rotating.

* Route turnsignal wires located inside fairing pockets through holes in bottom of fairing.

Connect
Wires

B. Connect the turnsignal and running lights (if applicable) by plugging the bullet connectors together using the color code in your Supplementary Instructions. Connect the ground wires to the tabs underneath the adaptor plates.



Objective

6. Reflector Remounting

Government regulations require that motorcycles have amber side reflectors on the front. Since the fairing normally covers the stock reflectors, they have been removed and should be re-located at this time.

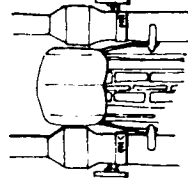
Mount
Reflector

* Using the motorcycle reflectors removed in step 1 or the reflectors provided in the hardware kit, and the 5mm or 6mm nuts provided, mount the reflectors to the reflector brackets.



Install
On
Forks

* Install the two mounting clamps with reflectors on the motorcycle forks as shown.



7. Windshield Installation

Refer to your Fairing Owner's Manual.

8. Final Adjustments

Refer to your Fairing Owner's Manual.

WARNING

FAILURE TO INSTALL THE WINDSHIELD PROPERLY, OR TO ATTEND TO FINAL ADJUSTMENTS COULD RESULT IN DANGEROUS INTERFERENCES DURING USE OF THE FAIRING AND MOTORCYCLE. FOR YOUR SAFETY, MAKE ALL NECESSARY ADJUSTMENTS BEFORE USING THE NEWLY-INSTALLED FAIRING.

Customer Service

If there are any problems concerning installation of the adaptor hardware, Vindicator II or Windjammer IV fairing that you or your dealer cannot solve, please contact the Customer Service Department, Vetter Corporation, 1150 Laurel Lane, San Luis Obispo, CA 93401, (805) 541-2900.